

PIPAC HEALTH & LIFE INSURANCE BROKERAGE

MAIN PHONE (319) 277-8541 | 1-800-765-1710 MAIN FAX (319) 277-9069

PO Box 729 | 1304 Technology Parkway, Ste 200 | Cedar Falls, Iowa 50613 | www.pipac.com



Greg Saul
President
800-765-1710
greg@pipac.com

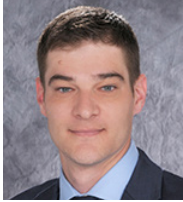


LeaAnn Saul
Vice President
800-765-1710
leaann@pipac.com

AGENCY SERVICES



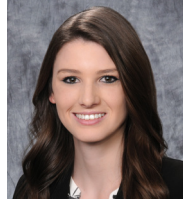
Scott Kipp
Operations Manager
319-268-7128
scott@pipac.com



Casey Hoffert
Director of Sales and Marketing
319-268-7116
casey@pipac.com



Josie Petersen
Agent Relations
319-268-7111
josie@pipac.com



Sidney Dilly
Executive Assistant
319-268-7118
sidney@pipac.com



Jenny Anderson
Contracting & Licensing
319-268-7121
jenny@pipac.com



Tracie Snyder
Marketing Specialist
319-268-7133
tracie@pipac.com



Matt Morgan
Marketing
319-268-7132
matt@pipac.com



Brianna Schaefer
Agency Relations Coordinator
319-268-7123
brianna@pipac.com



Kristen Wolter
Director of First Impressions
319-268-7136
kristen@pipac.com

INDIVIDUAL HEALTH DEPARTMENT



Beth Marcellus
Ind. Medicare Specialist
319-268-7103
beth@pipac.com



Carol Blythe
Ind. Medicare Specialist
319-268-7125
carol@pipac.com



Abbey Hatton
Ind. Health Specialist
319-268-7127
abbey@pipac.com



Jennifer Schmidt
Ind. Health Specialist
319-268-7126
jennifer@pipac.com

GROUP HEALTH DEPARTMENT



Amber Piper
Group Dept Manager
319-268-7108
amber@pipac.com



Jan Evert
Large Group Specialist
319-268-7117
jan@pipac.com



Erin Wentzien
Group Health Specialist
319-268-7107
erin@pipac.com



Austin Hall
Group Health Specialist
319-268-7109
austin@pipac.com

LIFE DEPARTMENT



Dave Oleson
Life Department
Manager
319-268-7112
dave@pipac.com



Justin Wagner
Sales Account
Representative
319-268-7114
justin@pipac.com



Marah Villa
New Business
Representative
319-268-7113
marah@pipac.com



Heather Klein
Business Development
Representative
319-268-7104
heather@pipac.com

COMMISSIONS



Sherry Saul
Commissions
319-268-7124
sherry@pipac.com



Jodi Fabrizio
Accounting & Commissions
319-268-7110
jodi@pipac.com